

Social Protection Systems, Public Services and Sustainable Infrastructure

Unpacking the CSW 63 Theme

| Mutale
Wakunuma

Presentation to the Zambian CSO for the
UN Commission on the Status of Women (CSW)
04/03/19



Presentatio n

- Understanding the Theme
- Why the three way focus



Outlin e

- Key issues for Africa
- CSO and the Political dimension



- The **sixty-third session** of the Commission on the Status of Women will take place at the United Nations Headquarters in New York from 11 to 22 March 2019.

Priority theme:

- Social protection systems, access to public services and sustainable infrastructure for gender equality and the empowerment of women and girls;

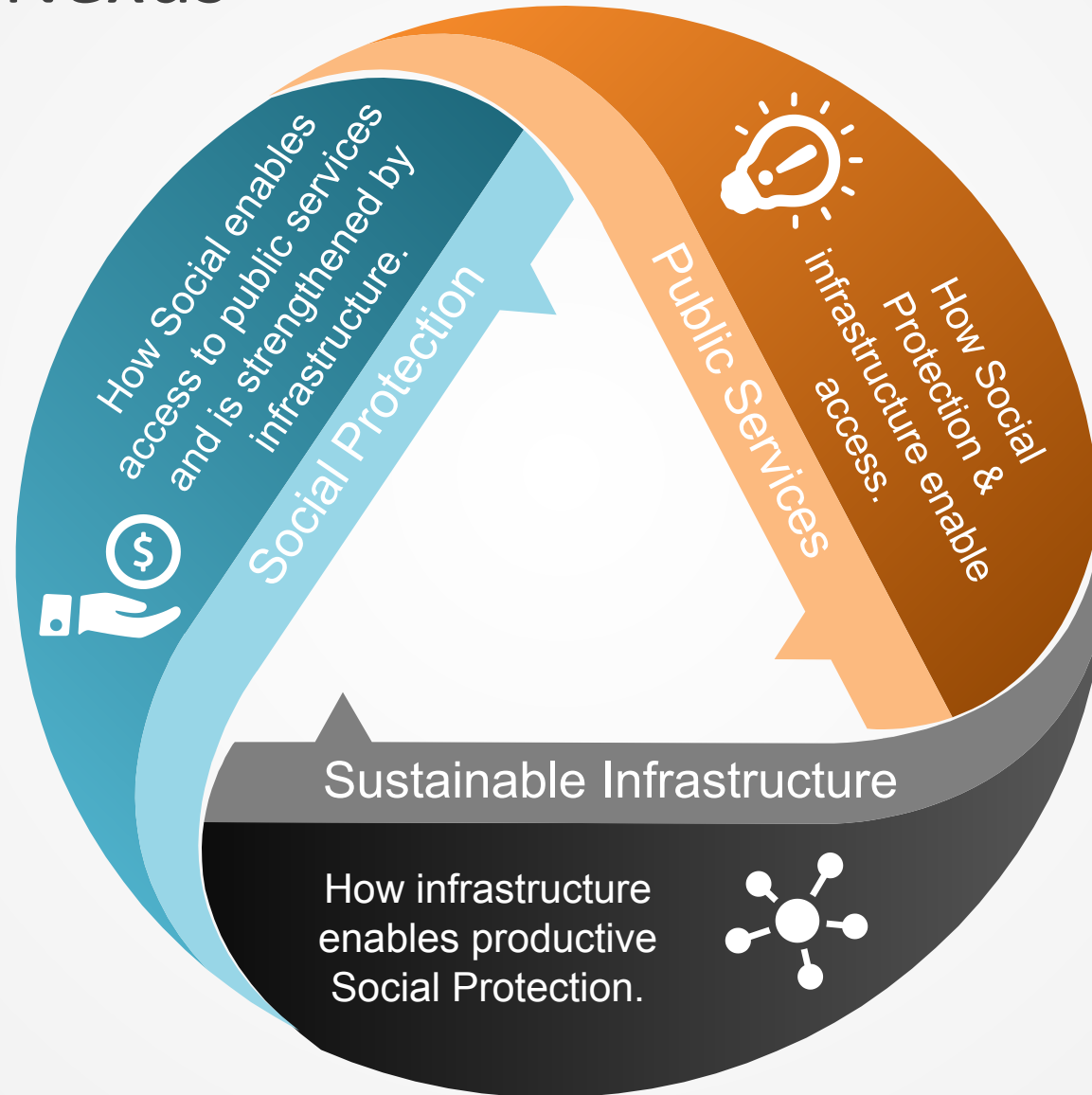
Review theme:

- Women's empowerment and the link to sustainable development ([agreed conclusions](#) of the sixtieth session);

The Social Protection, Public Services & Sustainable Infrastructure Nexus

Social Protection Systems

Preventing, managing and overcoming situations that adversely affect people's wellbeing.



Public Services

Services provided by government to its people either directly (through the public sector) or by financing provision of services.

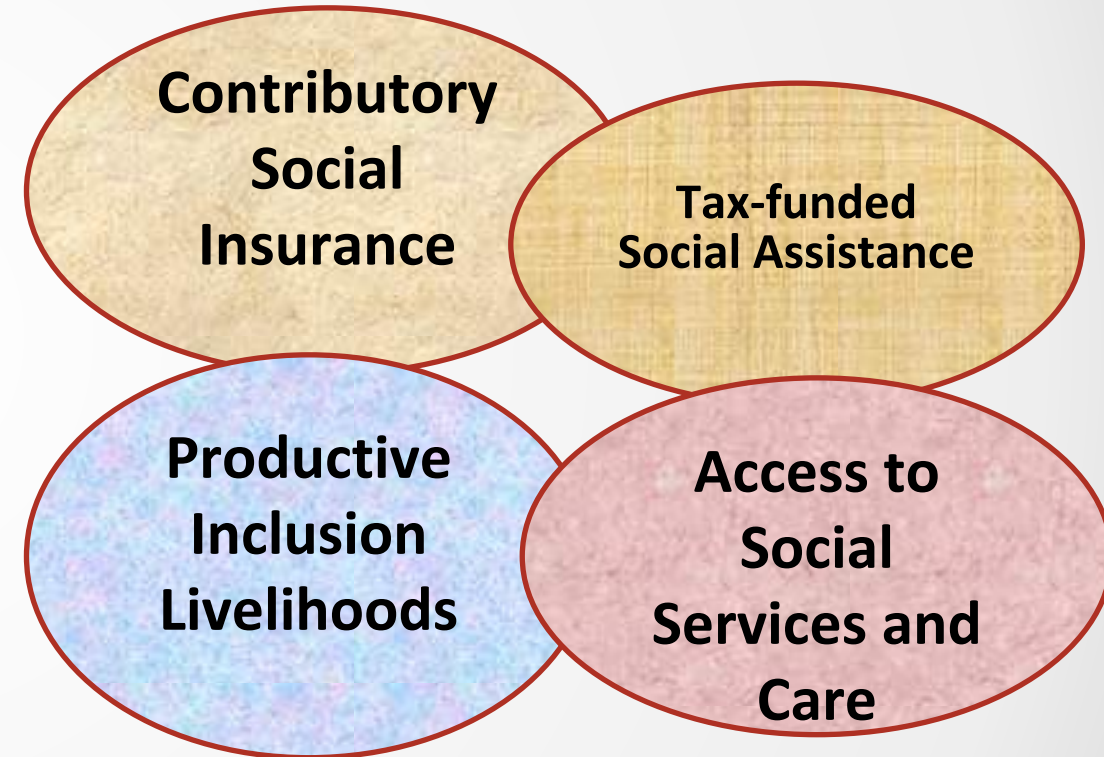
Sustainable Infrastructure

The development of transport infrastructure, buildings, energy and water infrastructure, but requires careful consideration due to the enormous impacts to the well-being of people and the planet.

Unpacking the CSW theme

The CSW63 theme which focuses on **Social protection systems, public services and sustainable infrastructure** can be broken down (by EGM report) as follows:

- 1. Social protection Systems:** *Set of Policies and Programs concerned with preventing, managing and overcoming situations that adversely affect people's wellbeing. ;*
- 2. Public services:** In the care sector to reduce unpaid care work, access to health care and education services with regards access, affordability, etc
- 3. Sustainable infrastructure:** physical infrastructure including school buildings with safe sanitation facilities for girls, Energy, transport, water, sanitation and waste management are crucial sectors for sustainable infrastructure



Multiple SDGs Link to the Theme

SDG 5



SUSTAINABLE DEVELOPMENT GOALS

5 GENDER EQUALITY

Call out sexist language and behaviour.

© UN Women / Wilson Dancus

Target 5.4 'Recognize and value unpaid care and domestic work through the provision of public services, infrastructure and social protection policies and the promotion of shared responsibility within the household and the family as nationally appropriate'.

SDG 8



SUSTAINABLE DEVELOPMENT GOALS

8 DECENT WORK AND ECONOMIC GROWTH

Buy from green companies that are equal opportunity employers.

© UN Photo/Pagouli Cerriz

Target 8.3 Promote development-oriented policies that support productive activities, and **Target 8.8** Protect labour rights and promote safe and secure working environment.

SDG 11



SUSTAINABLE DEVELOPMENT GOALS

Strong UN. Better World

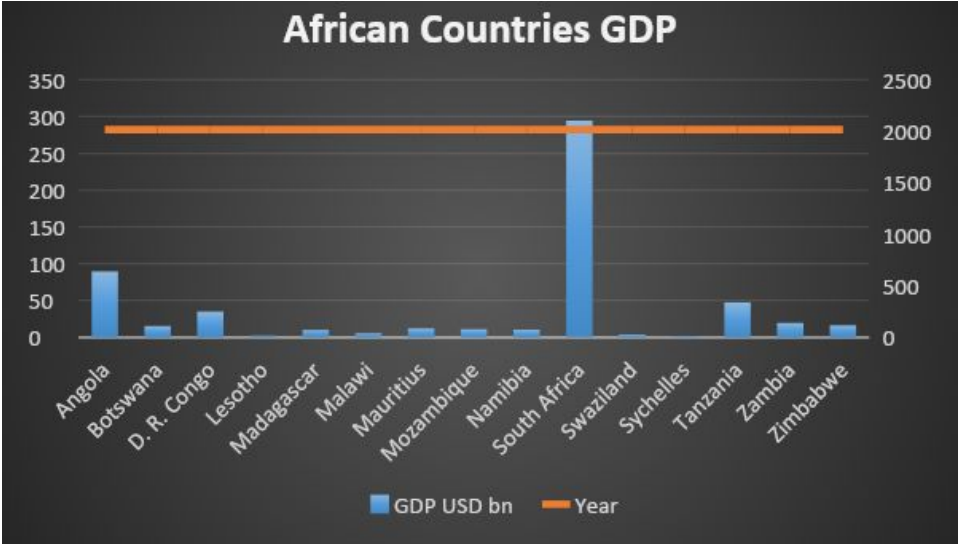
11 SUSTAINABLE CITIES AND COMMUNITIES

Bike, walk or use public transportations to keep our cities' air clean.

© UN Belarus

Target 11.2 By 2030, provide access to safe, affordable, accessible and sustainable transport systems for all.

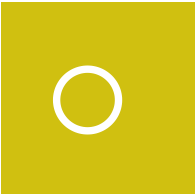
Gender Overview



Poor education, poor nutrition, indecent employment, unequal access to productive resources and public services



Informal economy – lower skill + lower capital + lower income segments .



Exclusion means – obstacles to access basic services (health, education, employment)



Poverty = Injustice + Discrimination + exclusion .



1.2bn

Population



41%

Poor



57%

Female Poor

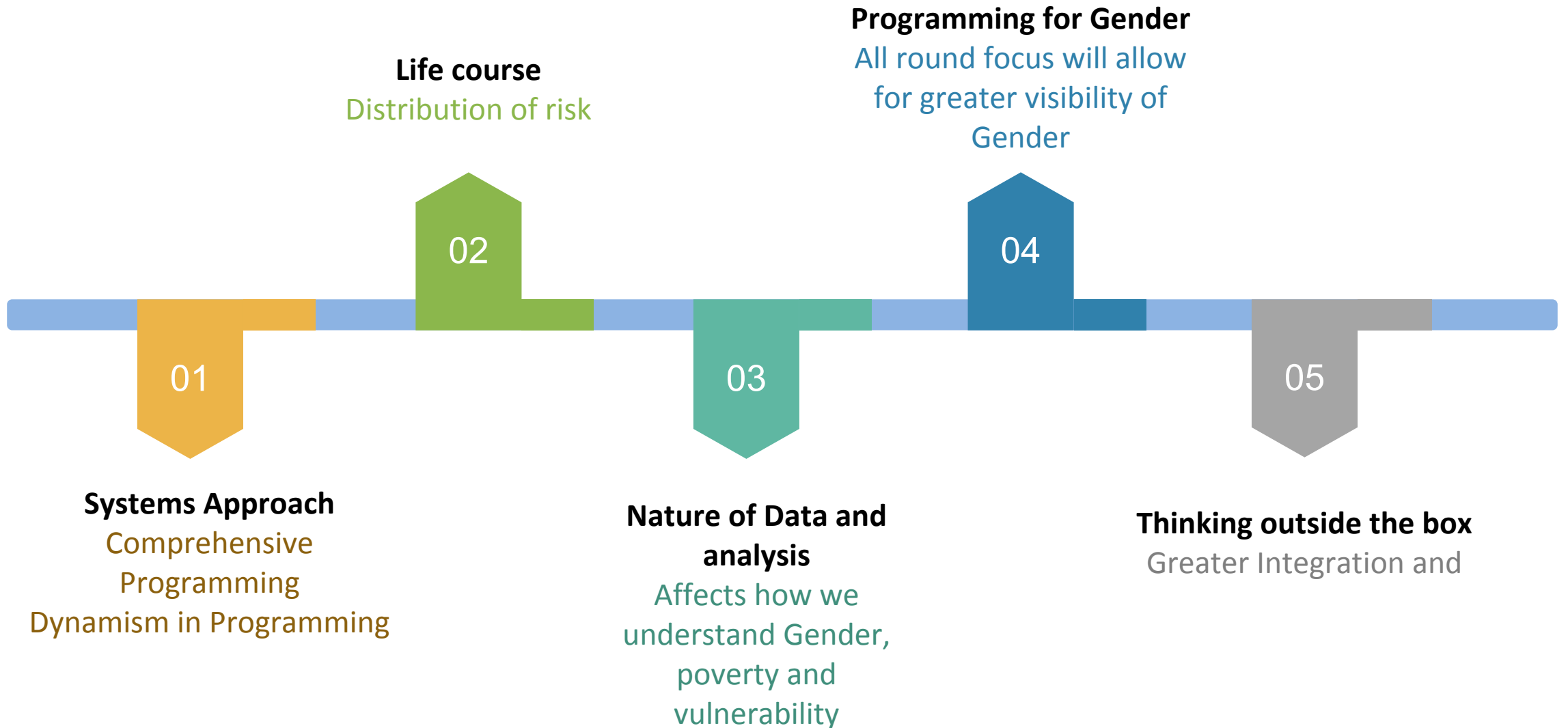


2.19tn

GDP



Linking the Theme to Gender



Why the Three Way Theme?



Interlinkages between social protection systems, public services and sustainable infrastructure



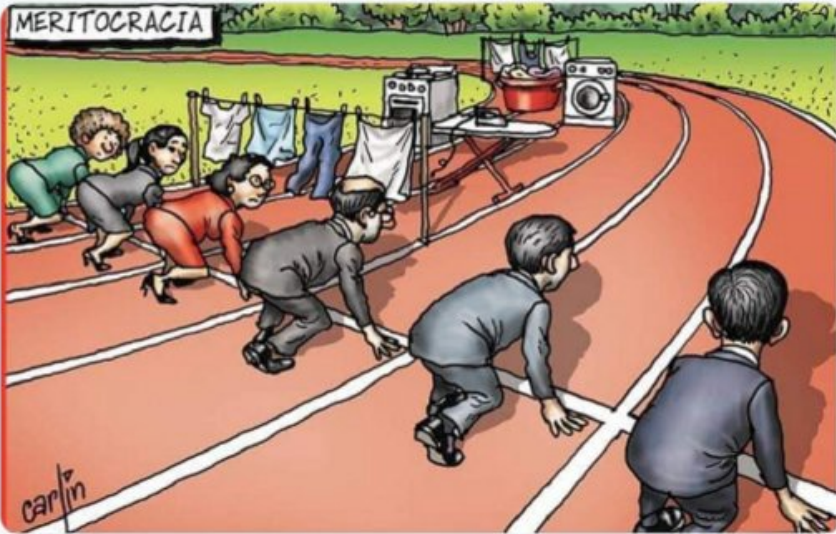
Coordination and policy coherence across sectors



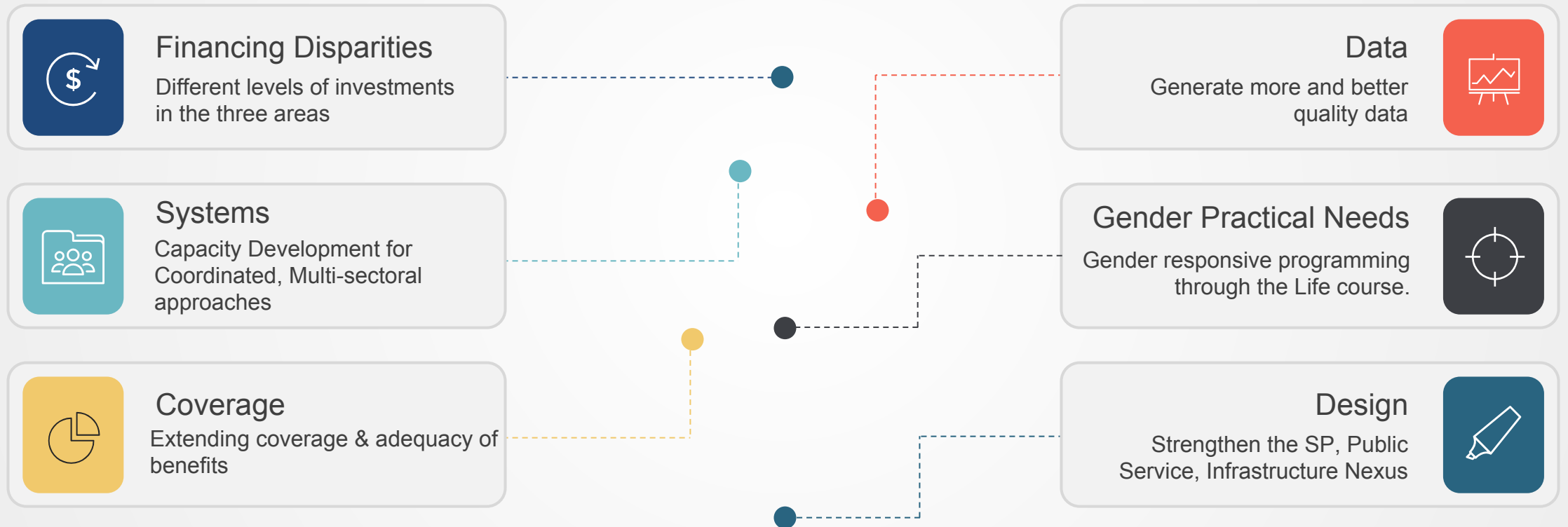
Complement one another's objectives, functions and financing, avoid trade-offs and harness synergies



Gender equality and the empowerment of women and girls



Key Issues for Africa



Political Dimension

Purse

The nature of resourcing the theme components is a reflection of the political will to equitably finance the policy areas – **CSO -Budget related Evidence informed Advocacy**

Power

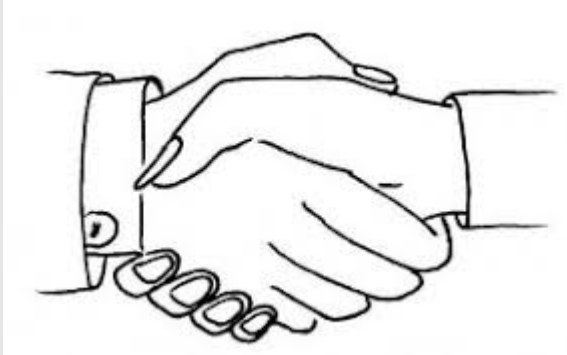
Unified voice for gender responsive integrated policies that requires fundamental transformation of economic and social institutions, including the beliefs, norms and attitudes that shape them – **CSO- Convening, evidence & mobilising**

Parliament

Strengthening the normative, legislative and institutional environment for gender responsive policy making and for greater integration – **CSO - Advocacy**

Partnership

Ensuring the elaboration of the roles of different partners, development partners, private for profit, private non-profit and recipients of the products or services - **CSO - Stakeholder Engagement and coalition building**



| Thank
You